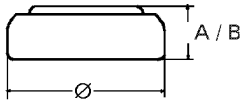


Data Sheet

Type Number: 392
 Designation IEC: SR 41
 System: Silver oxide / Zinc /
 KOH - Electrolyte
 Nominal Voltage [V]: 1,55
 Typical Capacity C [mAh]: 38
 Load 13 kOhm, at 20 °C down to 1.3 V
 Weight, approx [g]: 0,69
 Volume [ccm]: 0,16
 Coding: Manufacturing Month/Year
 by Letter Code



Temperature Ranges [° C]: **min.** **max.**
 Storage: -10 65
 Discharge: -10 65
 Dimensions [mm]: **min.** **max.**
 Diameter : 7,55 7,9
 Height [A/B]: 3,3 3,6

Segment: Watch / Low Drain
 Main Applications: Watch
 Photo
 Electronic

Typical Capacities (at 20° C):

Discharge Type:	Load	End Voltage	1.2 V
Continuous 24h/d, 7d/w Current [µA]: 120	13000 Ω	Time:	320 h
		Capacity [mAh]:	38
		Energy [mWh]:	56